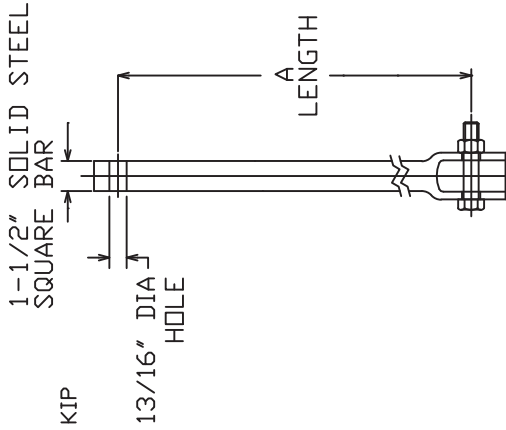


SS150 EXTENSIONS

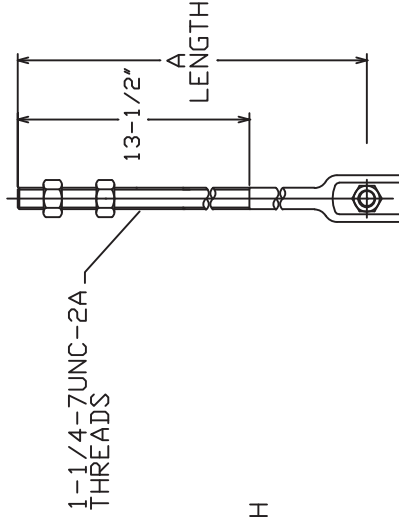
TORQUE STRENGTH RATING-7,000 FT-LB
 ULTIMATE CAPACITY*(TENSION/COMPRESSION)-70 KIP
 * BASED ON A TORQUE FACTOR (K+)=10
 SINGLE HELIX ULTIMATE STRENGTH-40 KIP
 ULTIMATE TENSION STRENGTH (COUPLING BOLT)-70 KIP

EXTENSION SECTION	
CAT. NO.	ICC-ES ⁺ LISTED
C150-0144	X
C150-0145	X
C150-0146	X
C150-0175	X
C150-0032	
C114-0009	

+ ICC-ES LISTINGS FORMERLY ICBD, SBCCI, AND BDCA.

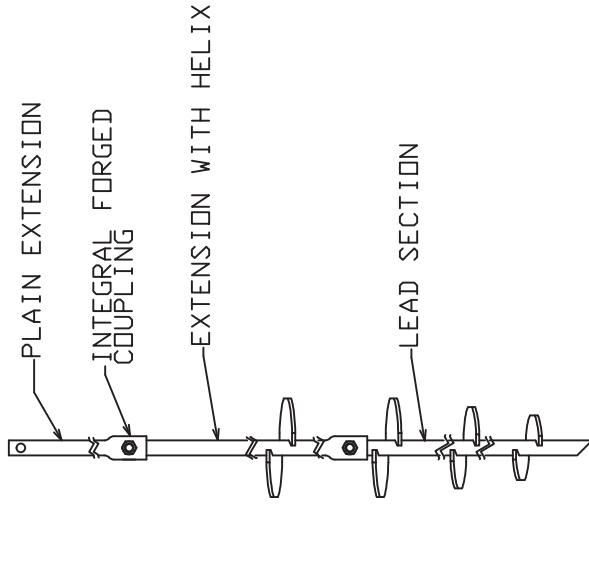


PLAIN EXTENSION



1" DYWIDAG ADAPTER
 C114-0009 FOR 1-1/2" SHAFT

THREADED ADAPTER
 C150-0032 FOR 1-1/2" SHAFT



TYPICAL ANCHOR/PLIER ASSEMBLY

==NOTES==

- HOT DIP GALVANIZED PER ASTM A153-(LATEST REVISION).
- LEAD AND EXTENSION SECTION LENGTHS AND HELIX SPACINGS ARE NOMINAL.
- SHAFT MATERIAL-HOT ROLLED ROUND-CORNERED-SQUARE (RCS) SOLID STEEL BARS PER ASTM A29; MINIMUM YIELD STRENGTH=70 KSI.
- COUPLING BOLTS: 3/4" DIAMETER X 3" LONG HEX HEAD PER ASTM A325 TYPE 1.
- MANUFACTURER TO HAVE IN EFFECT INDUSTRY RECOGNIZED WRITTEN QUALITY CONTROL FOR ALL MATERIALS AND MANUFACTURING PROCESSES.
- ALL WELDING TO BE DONE BY WELDERS CERTIFIED UNDER SECTION 5 OF THE AWS CODE D1. 1.
- SEE ICC EVALUATION SERVICE INC., EVALUATION REPORT NO. ER-5110 FOR ALLOWABLE VALUES AND/OR CONDITIONS OF USE CONCERNING MATERIAL PRESENTED IN THIS DOCUMENT.
- REFER TO SA150-10013 FOR LEAD SECTIONS AND HELICAL EXTENSIONS.

	TITLE SS150 EXTENSIONS	
	SIZE / DWG NO. SC / SA150-0144	CAT / PART / ASSY NO. SEE CHART
DO NOT SCALE THIS DRAWING		DATE 4/26/05

ICC-ES LISTED ER-5110

ICC-ES LISTED ER-9504

ICC-ES LISTED RR 94-27